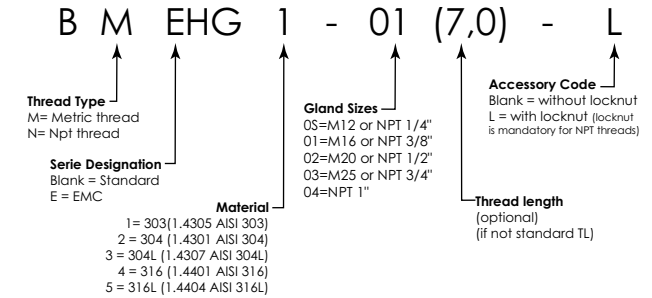


Hygienic Cable Glands Assembly Instructions

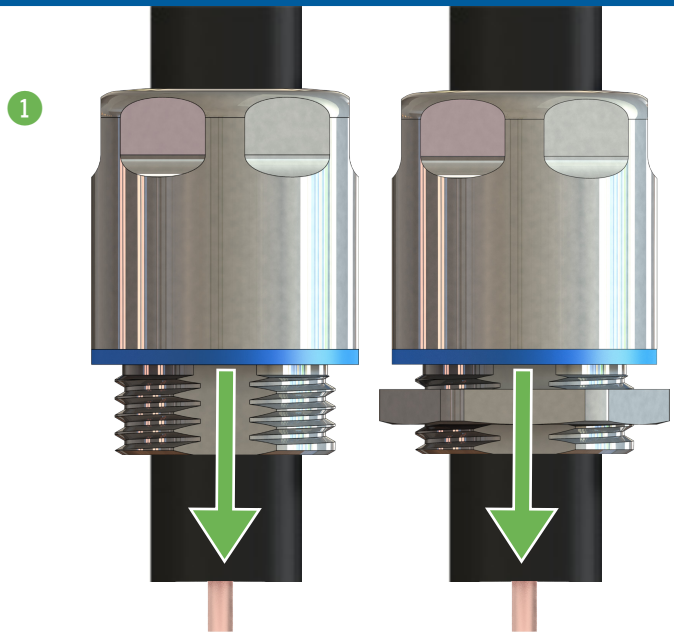
(for EMC and Standard)

THREAD SIZES	M12x1,5	M16x1,5	M20x1,5	M25x1,5	NPT 1/4"	NPT 3/8"	NPT 1/2"	NPT 3/4"	NPT 1"
GLAND CODE	BMHGX-0S	BMHGX-01 BMEHGX-01	BMHGX-02 BMEHGX-02	BMHGX-03 BMEHGX-03	BNHGX-0S-L	BNHGX-01-L BNEHGX-01-L	BNHGX-02-L BNEHGX-02-L	BNHGX-03-L BNEHGX-03-L	BNHGX-04-L
Ø Cable Clamping Range (mm)	3,0 - 6,5	5,0 - 10,0	6,0 - 12,0	12,0 - 17,0	3,0 - 6,5	5,0 - 10,0	6,0 - 12,0	12,0 - 17,0	15,0 - 21,0

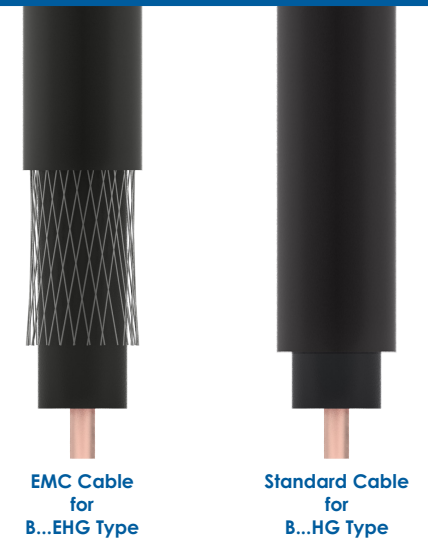
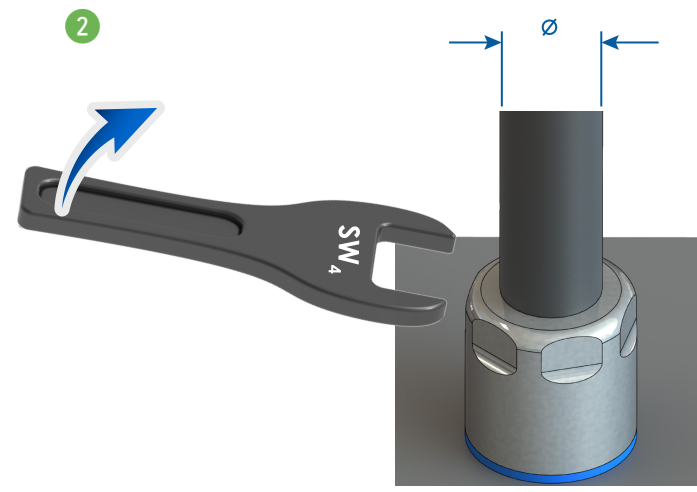
CODING EXAMPLE



Note: The assembly of the gland should be performed in a way that the distance to other installations/glands should be sufficient for easy cleaning.

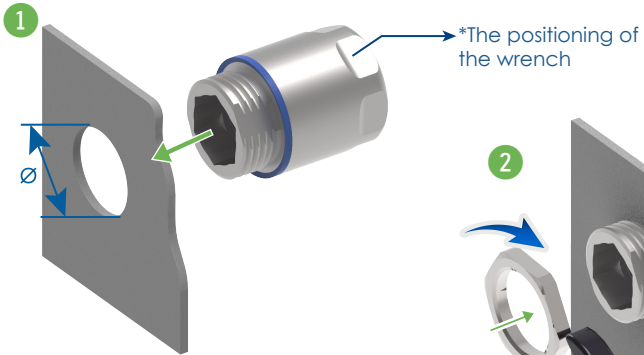


Cable Information

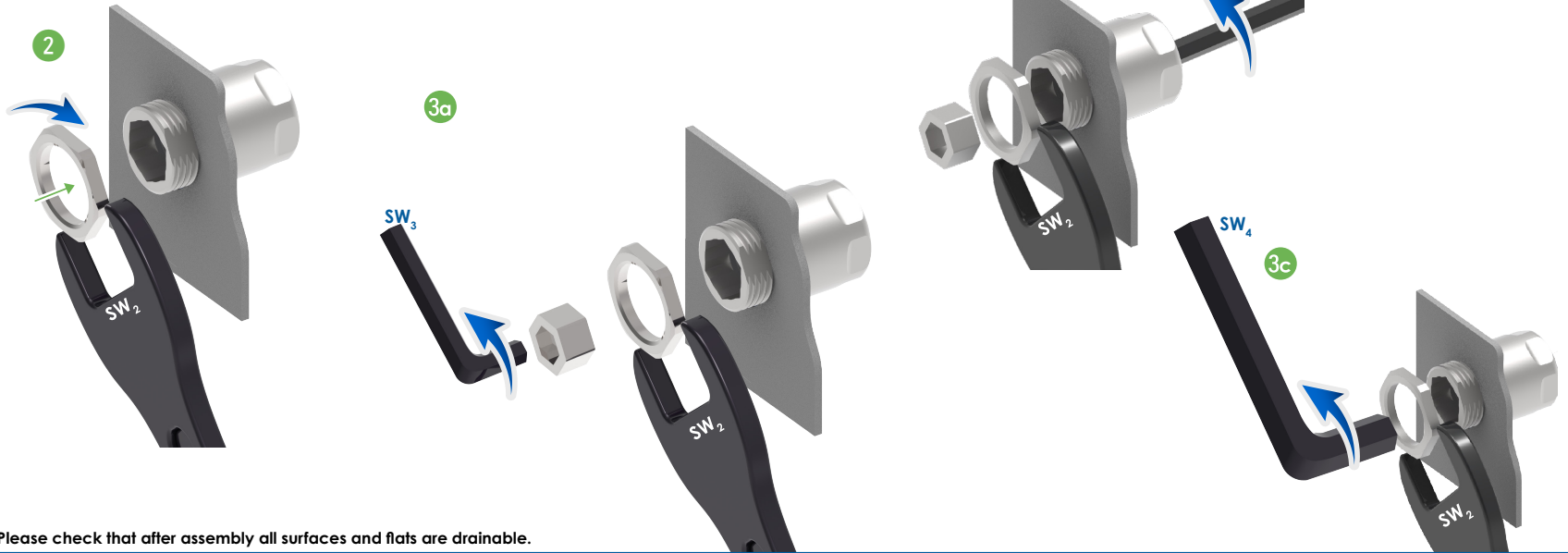


THREAD SIZES	M12x1,5	NPT 1/4"	M16x1,5	NPT 3/8"	M20x1,5	NPT 1/2"	M25x1,5	NPT 3/4"	NPT 1"
SW4	14	18	18	22	22	28	28	35	40

Hygienic Cable Glands Assembly Instructions



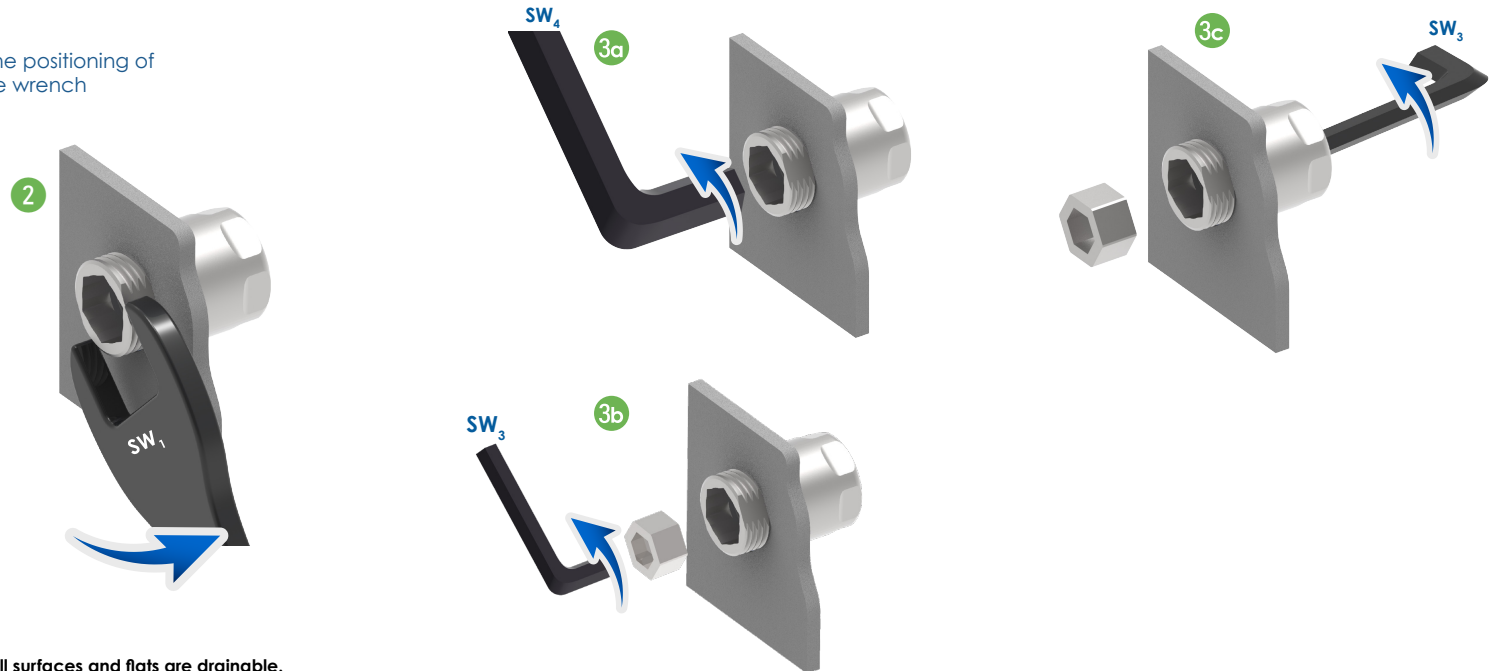
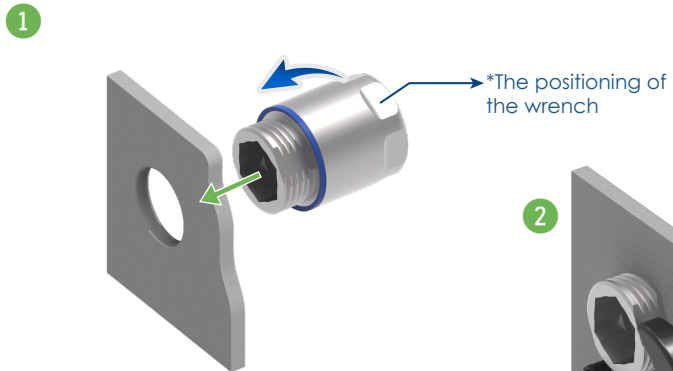
Option 1 (for Through Holes)



Thread Sizes	Ø Hole Diameter (min. - max.) mm		SW2	SW3	SW4
	*for EMC only				
M12 x 1,5	12,0	12,2	15	5	7
M16 x 1,5	16,0	16,2	19	6	10
M20 x 1,5	20,0	20,2	24	8	13
M25 x 1,5	25,0	25,2	30	10	17
NPT 1/4"	14,0	15,0	17	5	7
NPT 3/8"	17,6	18,8	22* / 24	6	10
NPT 1/2"	21,8	23,0	24	8	13
NPT 3/4"	27,7	28,9	30* / 35	10	17
NPT 1"	34,5	35,7	46	16	22

* Please check that after assembly all surfaces and flats are drainable.

Option 2 (for Threaded Holes)



Thread Sizes	SW1	SW3	SW4
M12 x 1,5	10	5	7
M16 x 1,5	13	6	10
M20 x 1,5	17	8	13
M25 x 1,5	22	10	17

* Please check that after assembly all surfaces and flats are drainable.